

HTL2 Eco Plus

Fuel-Efficient,
Long Haul Trailer

Applications: Heavy haul and long haul trailer positions.

Legend:

| | | | |
|-----------|--------------------|------------------|-------------------|
| | | | |
| 3G Casing | SmartWay® Verified | Intelligent Tire | Retread Available |

PRODUCT FEATURES ABOVE ONLY APPLY TO PRODUCTS IF THE MATCHING ICON IS DARKENED.

HTL2 Eco Plus

17.5" Heavy Haul Trailer Tire

GOODS PEOPLE CONSTRUCTION



PRODUCT DATA

| TIRE SIZE | LOAD RANGE | ARTICLE NUMBER | TREAD DEPTH (32nds) | MAX SPEED (MPH) | STATIC LOADED RADIUS | | OVERALL INFLATED DIAMETER | | OVERALL INFLATED WIDTH | | LOADED SECTION WIDTH | | APPROVED RIM(S) | MINIMUM DUAL SPACING | | REVS PER UNIT | | TIRE WEIGHT | | MAX. LOAD @ INFLATION | |
|-------------|------------|------------------------------|---------------------|-----------------|----------------------|-----|---------------------------|-----|------------------------|-----|----------------------|-----|-----------------|----------------------|-----|---------------|-----|-------------|----|-----------------------|-----------------------|
| | | | | | IN | MM | IN | MM | IN | MM | IN | MM | | IN | MM | MI | KM | LB | KG | SINGLE | DUAL |
| | | | | | LBS, PSI (KG, KPa) | | LBS, PSI (KG, KPa) | | | | | | | | | | | | | | |
| 215/75R17.5 | H | 05311070000 | 15 | 75 | 14.1 | 359 | 30.4 | 772 | 8.5 | 215 | 9.1 | 231 | 6.00, 6.75 | 9.5 | 242 | 681 | 423 | 61 | 28 | 4805, 125 (2180, 860) | 4540, 125 (2060, 860) |
| 235/75R17.5 | J | 05311080000 *04650170000* | 13 | 75 | 14.5 | 369 | 31.6 | 802 | 9.2 | 234 | 10.0 | 254 | 6.75, 7.50 | 10.6 | 269 | 656 | 407 | 65 | 29 | 6005, 125 (2725, 860) | 5675, 125 (2575, 860) |
| 245/70R17.5 | J | 05311090000 *04650160000* | 13 | 75 | 14.5 | 369 | 31.6 | 802 | 9.2 | 234 | 10.0 | 254 | 6.75, 7.50 | 10.6 | 269 | 656 | 407 | 65 | 29 | 6005, 125 (2725, 860) | 5675, 125 (2575, 860) |

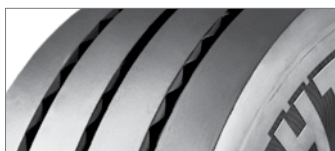
TUBELESS TIRES ON 15 DEGREE DROP CENTER RIMS

Note - Rim listed first is the measuring rim. ** = Intelligent Tire Article #. Minimum Dual Spacing calculated without chains. # - Exceeding the lawful speed limit is neither recommended nor endorsed. Overall widths will change 0.1 inch (2.5 mm) for each 1/4 inch change in rim width. Minimum dual spacing should be adjusted accordingly. Continental Tire the Americas, LLC reserves the right to change product specifications at any time without notice or obligations. Please consult rim manufacturers load and inflation limits. Never exceed rim manufacturers limits without permission of component manufacturer.

Features & Benefits



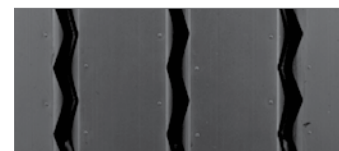
Low rolling resistance compound provides excellent fuel economy at cool operating temperatures.



Advanced tread design provides long original mileage and low cost per mile.



Heavy ply construction for structural durability in large capacity applications.



Patented groove technology leads to minimum stone retention, extending casing life.

Innovative groove geometry promotes efficient water evacuation, traction and wet braking capabilities throughout tire life.

Applications: Heavy haul and long haul trailer positions.